

KIZUNA, Japan & FSM

September 25, 2015

Masaki Sakai
Japanese Ambassador to the FSM

Japanese words used in the FSM

Futon (布団)	Okashi (お菓子)
Sashimi (刺身)	Bento (弁当)
Hanabi (花火)	Denki (電気)
Kaeru (蛙)	Jidosha (自動車)
Jyanken (じゃんけん)	Sensei (先生)
Rakkasan (落下傘)	Yoidon (ヨーイドン)
Hanzubon (半ズボン)	Oendan (応援団)
Syoyu (醤油)	Senshu (選手)

日本 Japan

Neighbouring country

Traveling time from Pohpei

	10h		15h		24h		24.5h
---	-----	---	-----	--	-----	---	-------

Safe country Murder per 0.1million people

	0.35		1.00		1.08		4.67
--	------	--	------	--	------	--	------

Country of longevity

	83		82		79		76
---	----	---	----	---	----	---	----

HATSUMODE (New Year's Shrine Visit)



SAKURA (Cherry Blossoms)



Photo/AFLO

HINAMATSURI (The Doll's Festival)



Tango no Sekku (The Boy's Festival)



Photo/AFLO

Hanabi (Fire Works)



Photo/AFLO

SUMO



MOMIJI



SNOW



YUKI MATSURI (Snow Festival)



Tokyo Olympics

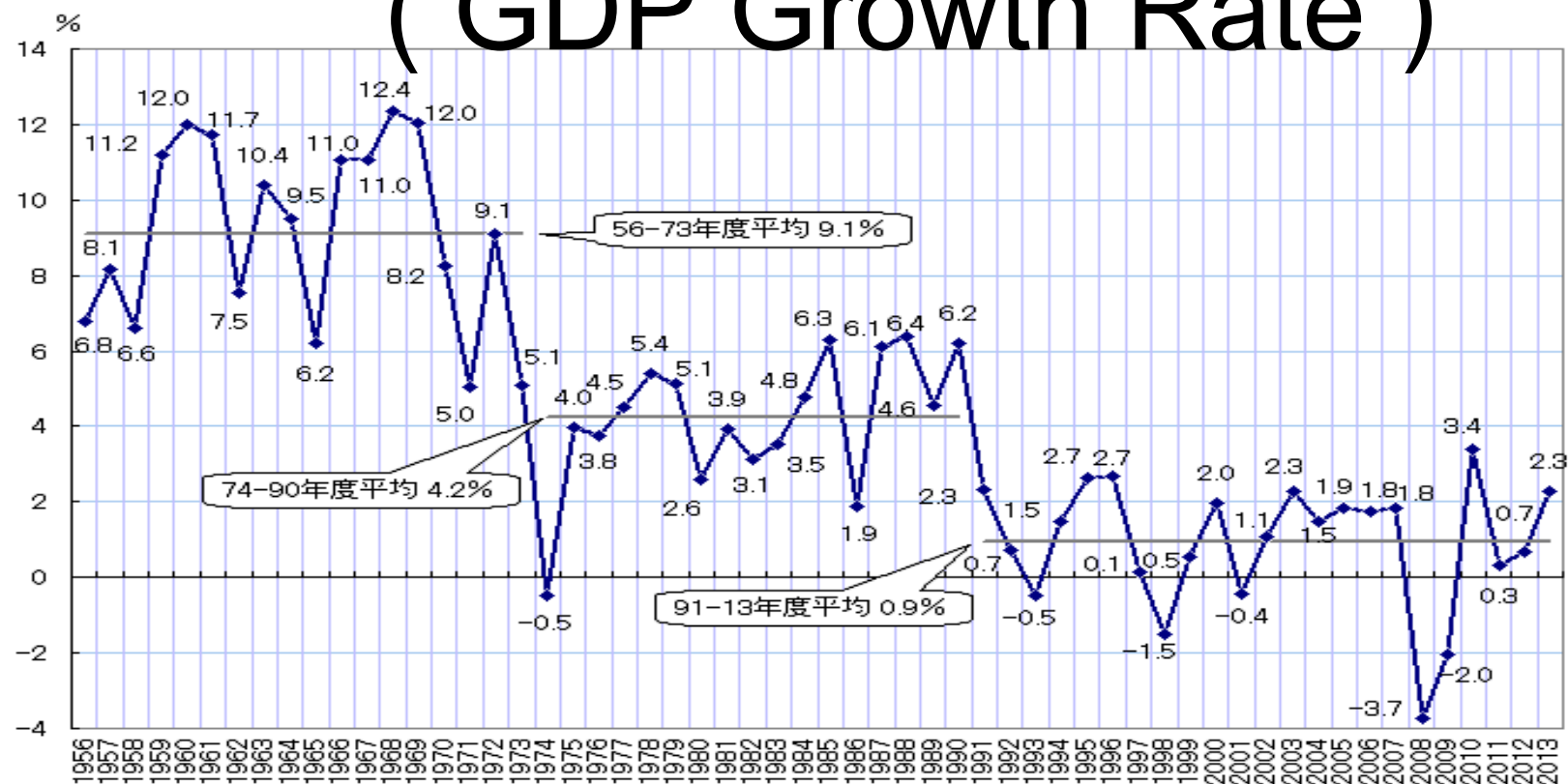
-Spirit of Omotenashi



Japan as a stable economy

経済成長率の推移

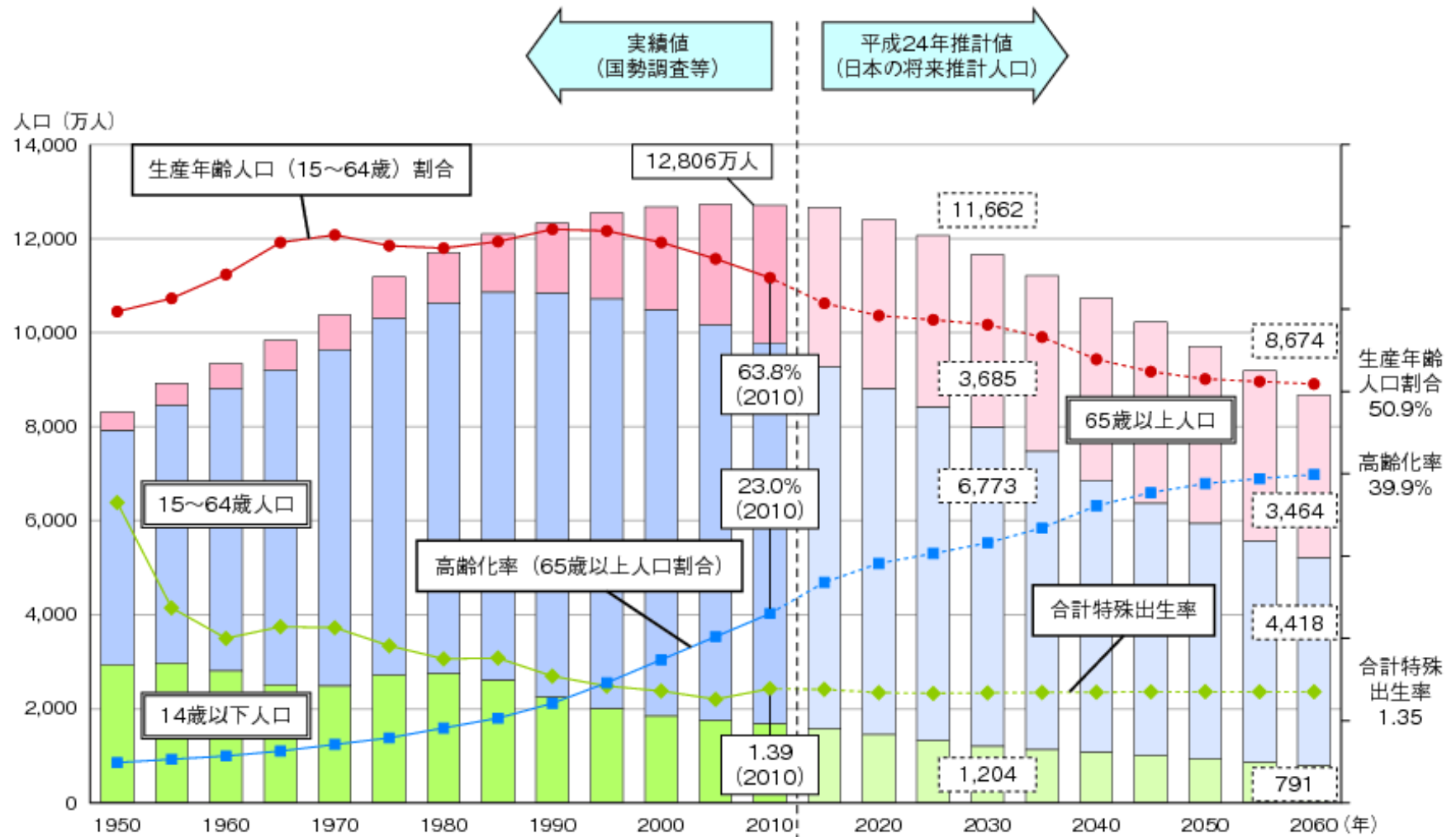
(GDP Growth Rate)



(注) 年度ベース。93SNA連鎖方式推計。平均は各年度数値の単純平均。1980年度以前は「平成12年版国民経済計算年報」(63SNAベース)、1981～94年度は年報(平成21年度確報)による。それ以降は、2014年1-3月期 2次速報値 <2014年6月9日公表>、1次速報値と同値。

(資料) 内閣府SNAサイト

Decreasing & Aging Population



Concentration on the large cities

Rate of Change

Overall -0.17

Tokyo 0.53

Okinawa 0.44

Aichi 0.21

Saitama 0.14

Kanagawa 0.13

Miyagi 0.11

Shiga 0.09

Fukuoka 0.09

.

.

.

Wakayama -0.84

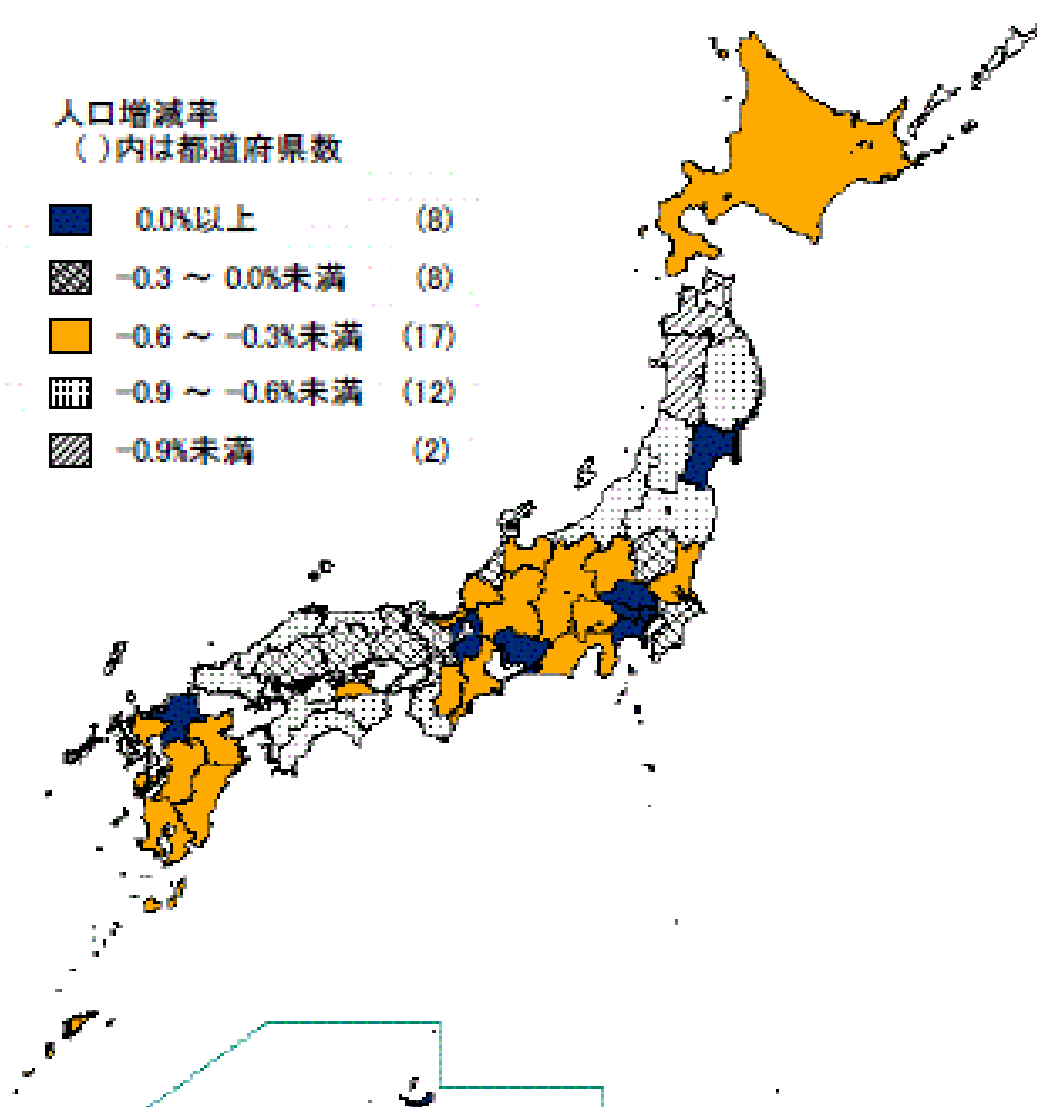
Kochi -0.89

Yamagata -0.90

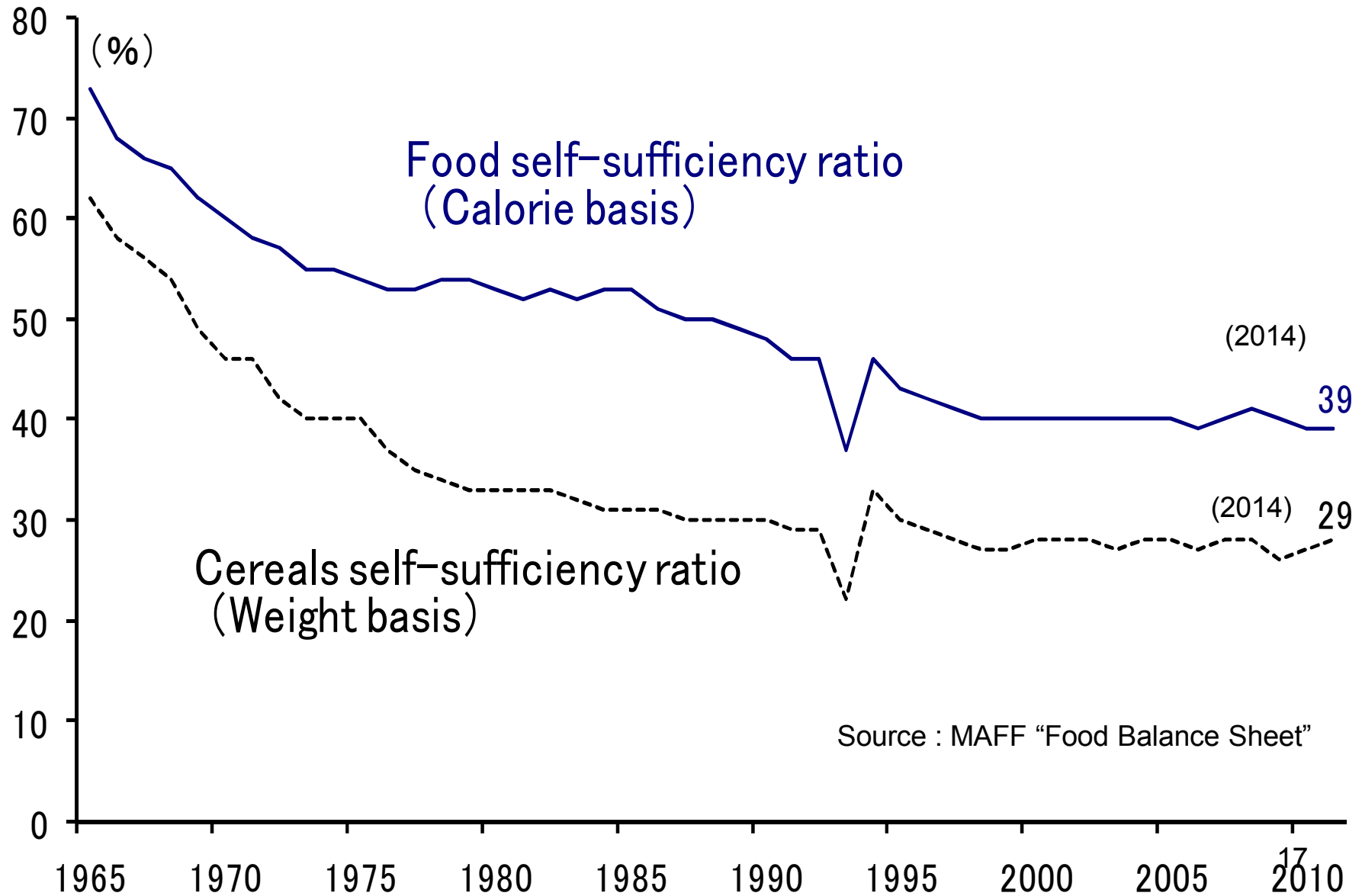
Aomori -0.97

Akita -1.18

図4 都道府県別人口増減率



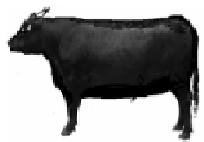
Food Security in Japan



Food Demand

World Population (billion people)
7.2(2013)~9.6(2050)~10.3(2070)~10.9(2100)

Increased Demand for Feed to produce Livestock Products



11 kg



7 kg

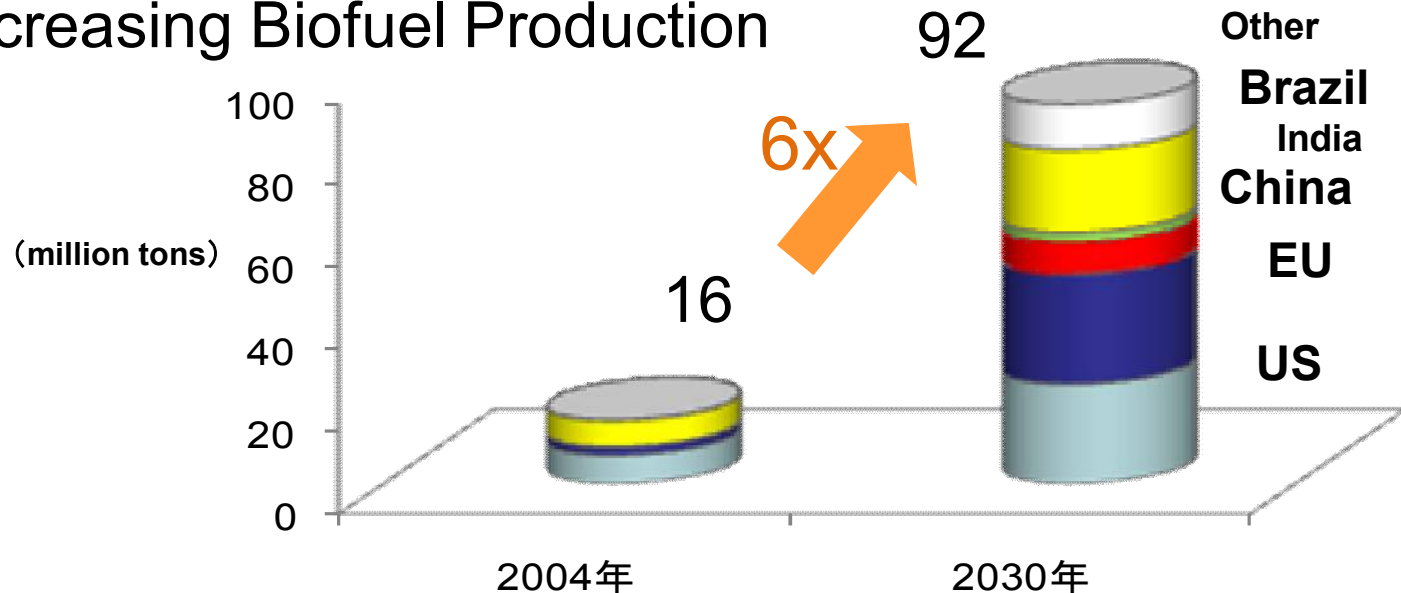


4 kg



3 kg

Increasing Biofuel Production



Food Supply

Cultivated Farmland Area

650 million ha → 670 million ha
(1961~1963) (2002~2004)

Yield Growth Rate

3.0% (1960's) → 2.0% (1970's) → 1.7% (1980's) → 1.3% (1990's)

Increasing Use of Irrigation Water

It is necessary to expand irrigated areas by 23% and increase irrigation water by 14% in the developing countries for forthcoming 30 years.

Influence of Global Warming

Common Challenges

- Decreasing Population
in remote areas
 - Revitalizing Local Economy
- Food Import Dependency
 - Enhancing Food Security

A large, bold, black Japanese character '絆' (Kizuna) is displayed on the left side of the slide. The character is stylized with thick strokes and a slight shadow effect.

KIZUNA
Strong Bond

This word KIZUNA became more frequently used after the East Japan Great Earthquake.

East Japan Great Earthquake(March 11, 2011)

Dead and missing	18466
Number of Evacuees	207132 (June 2015)

Benefit Concert in Pohnpei unites people of all ages in support of Japan (March 30, 2011)

"We don't have much but we wanted to send the message that the people of Micronesia really care about the people of Japan. We wanted to do it. It was something we could do."



絆

KIZUNA



~Activities of JICA Volunteers ~

JICA Volunteer Activities (July 2015)

YAP	CHUUK	POHNPEI	KOSRAE
Fisheries Development	Environmental Education	Telecommunications	Elementary Education
Elementary Education	Tourism	Agricultural Processing	Road Management
Waste Management	Japanese Language	Fisheries Processing	Waste Management
	----- (Pohnpei)	Elementary Education	----- (Pohnpei)
	Public Health	Environmental Education	Nursing Education
	Hospital Management	Home Economy	Nutritionist

Japan's In-Kind Assistance

① General Grant Assistance

- Circular Roads**
- Passenger Cargo Ships**

② Non- Project Grant Assistance

- Excavator ▪ Medical equipment**

③ Grassroots Grant Assistance

- Multi Purpose Center**
- Fukuoka method**

(Semi – aerobic landfill system)

Waste Management Projects

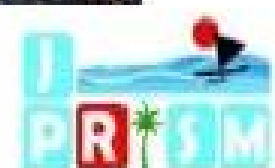
Grass-Roots Projects J-PRISM (2011-2016)

- Compactor
 - Garbage Truck
 - Dump Truck
 - Recycling Center
 - Pet Bottle Crasher
 - Wood Chipper
- Promotion of Regional Initiative on Solid Waste Management
 - Planning & Training
 - Landfill Improvement
 - Visiting Experts
- Mr. Akira Haseyama
Ms. Lisa Muranaka





National and State Solid Waste Management Strategies



Strengthening KIZUNA is a very important aspect for these challenges.

Go Local !!!

Substituting imported foods with local foods

- 1 Stimulate Local Economy
& Creating Employment
- 2 Good for People's Health
- 3 Protecting Environment
- 4 Ensuring Food Security

Japanese Government Scholarship Program for

- Undergraduate Students
 - Specialized Training College Students
 - Research Students
- For further details, please visit “ Japanese Government Scholarship Program” of our HP at**
-<http://www.micronesia.emb-japan.go.jp>

Japan Foundation Japanese Language Program for

- Overseas Students (Outstanding Students) (15 days)
- Foreign-Service Officers/ for Public Officials (8 months)

Global 30: Japanese universities with English degree courses HP: <http://www.uni.international.mext.go.jp/>

2015

JAPAN FESTIVAL

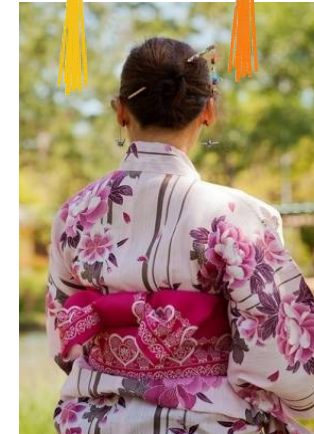


Song & Dance

- Hana Ha Saku (Song for Tsunami affected areas)
- Sohran Bushi
- Keyboard Harmonica Performance
- Dance by Pohnpei Youth Council
- Bon Festival Dance (Participants Welcome)



Spend a
day in
Japan
with us!



Cultural Experience

- Calligraphy
- Kami Shibai (Storytelling)
- Yukata Photoshoot
- Games
- Origami

OLM Gymnasium

October 17. 2015

1:00pm - 4:00 pm

At the top of the Sokehs Mountain

GLOBAL PEACE For ALL



Arigato (ありがとう)
Kalagan
Thank you very much.

masaki.sakai@mofa.go.jp